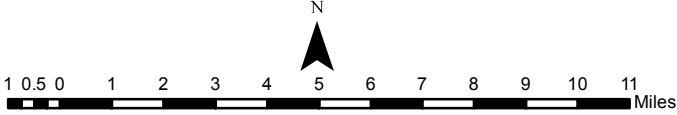
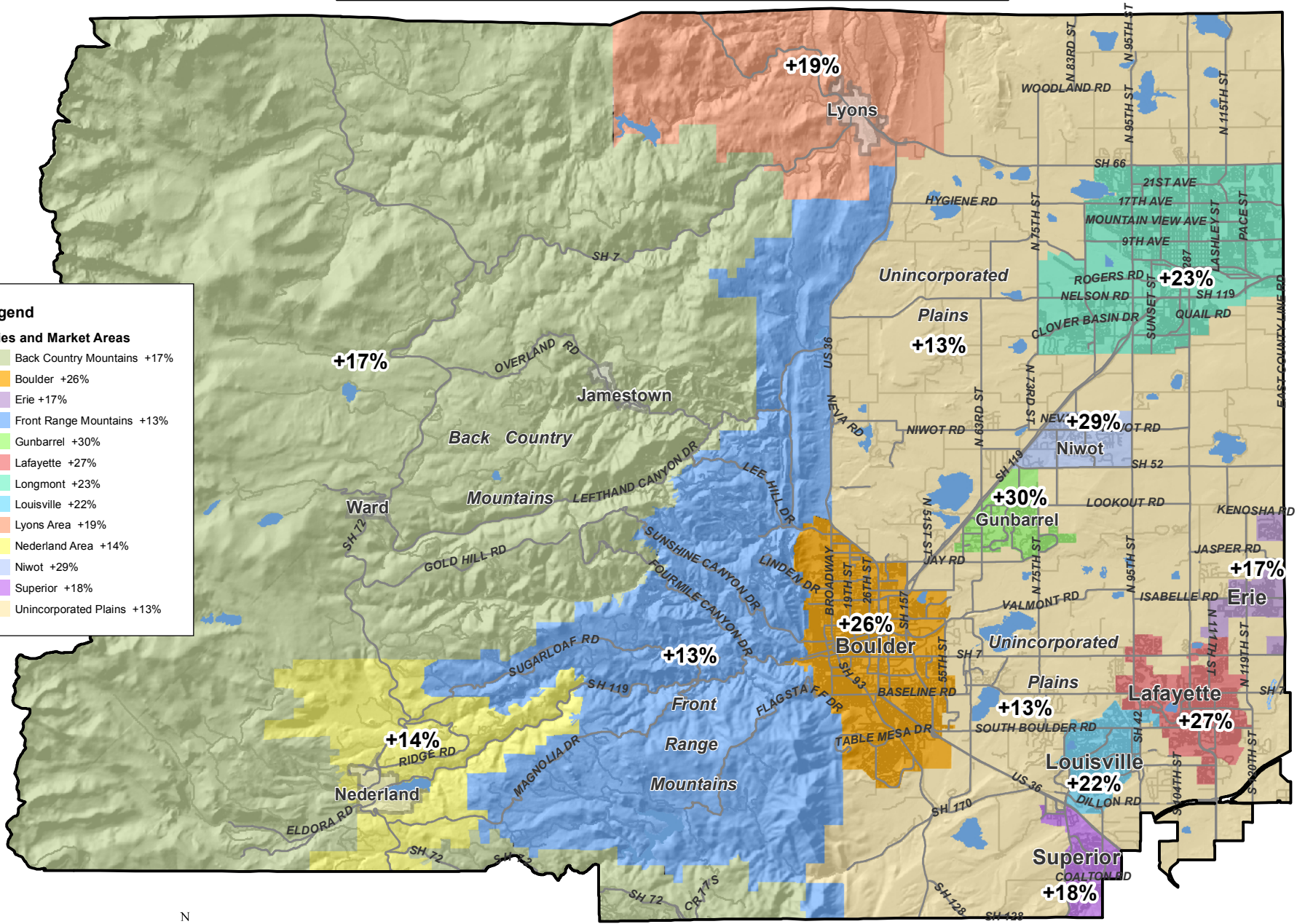


# 24-Month Median Value Changes for 2017 Reappraisal of Single Family Residences

**Legend**

**Cities and Market Areas**

- Back Country Mountains +17%
- Boulder +26%
- Erie +17%
- Front Range Mountains +13%
- Gunbarrel +30%
- Lafayette +27%
- Longmont +23%
- Louisville +22%
- Lyons Area +19%
- Nederland Area +14%
- Niwot +29%
- Superior +18%
- Unincorporated Plains +13%



**DISCLAIMER:**  
 This map is for illustrative purposes only and the features depicted on it are approximate. More site specific studies may be required to draw accurate conclusions. Boulder County makes no warranties regarding the accuracy, completeness, reliability, or suitability of this map. Boulder County disclaims any liability associated with the use or misuse of this map. In accessing and/or relying on this map, the user fully assumes any and all risk associated with the information contained therein.

**COPYRIGHT**  
 (c) 2008 by the County of Boulder, Colorado. All rights reserved. No part of this data may be copied, reproduced, or transmitted in any form or by any means whether graphic, electronic, or mechanical including photocopying, recording, or by an information storage and retrieval system, without written permission from the County of Boulder, Colorado.